

TARC
ISHVA

63A, Gurugram



TARC

Inspired by India | भारतेन प्रेरितः

India's essence is a confluence of art and innovation.
At TARC, we are inspired by the grandeur of ancient India.

In our ethos, you'll find a celebration of India's unparalleled legacy:
the perfect blend of age-old wisdom, deep-rooted
sustainability and modern aesthetics.

In India's past, we find our future. In its art, our aesthetic.
In its science, our solutions. And in its tradition of sustainability,
our guiding principles.



TARC
ISHVĀ

63A, Gurugram

A PIONEER OF FOUR-SIDE OPEN RESIDENCES



TARC
ISHVA

63A, Gurugram

ENHANCED FLOOR-TO-CEILING HEIGHTS

PERFECTLY SQUARE LAYOUTS

THE FINEST FOUR-SIDE OPEN RESIDENCES

UNINTERRUPTED ARAVALLI AND SKYLINE VIEWS

PERFECTLY VASTU-ALIGNED 3 & 4 BED RESIDENCES

PILLAR-FREE CORNERS

PRIVATE ELEVATOR CORES

DUAL ACCESS FROM BOTH THE 24-METRE ROAD & 84-METRE WIDE ROAD

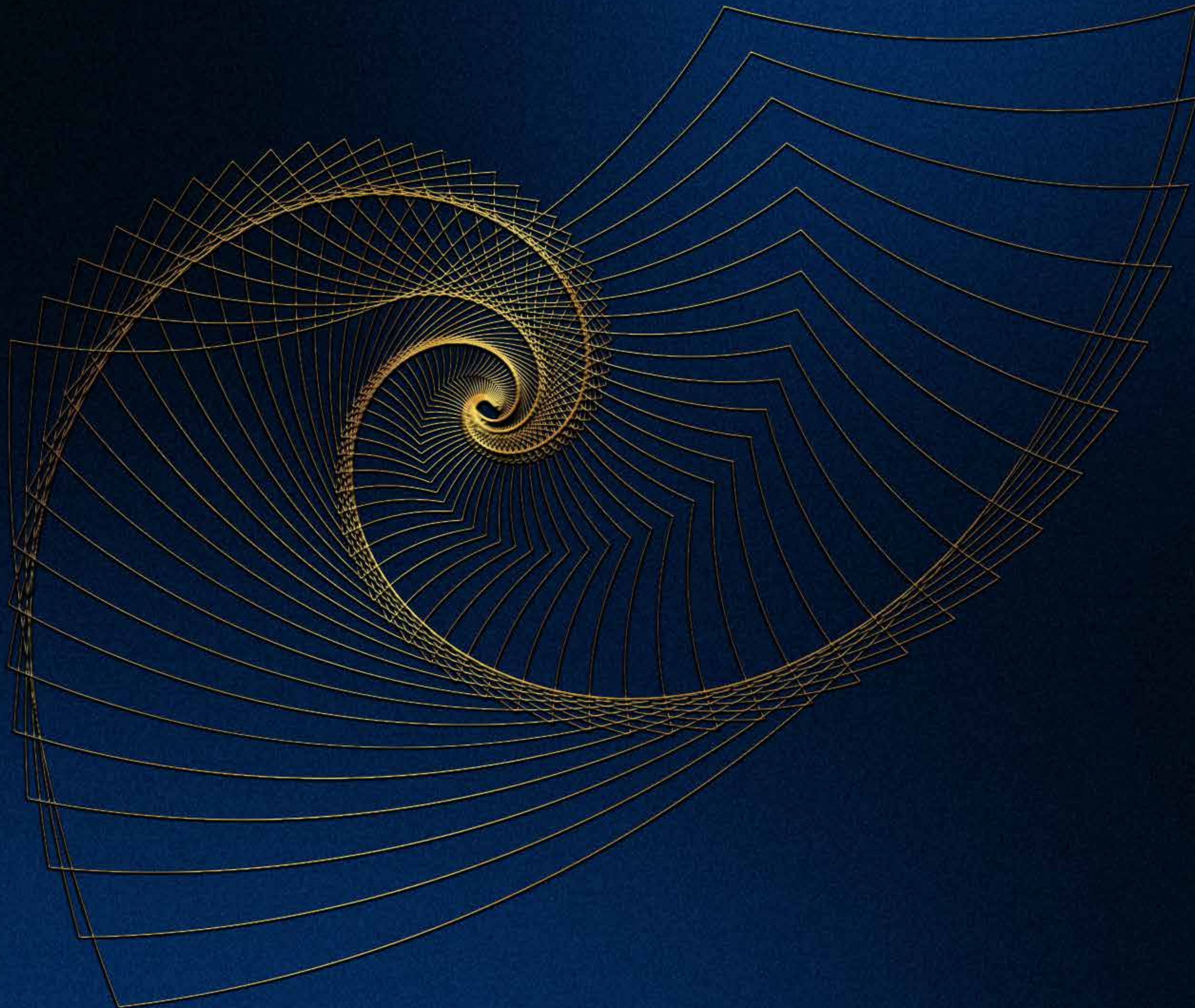
EXCLUSIVE STILT-LEVEL AMENITY ZONES

EXPANDED 4-TIER CLUBHOUSE WITH ENRICHING EXPERIENCES AND AMENITIES

REDESIGNED MOVEMENT PLAN WITH SMOOTHER DROP-OFFS AND CIRCULATION

UPGRADED LANDSCAPES WITH THEMATIC GARDENS

ARCHITECTURE ROOTED IN INDIANNESS AND THE GOLDEN RATIO



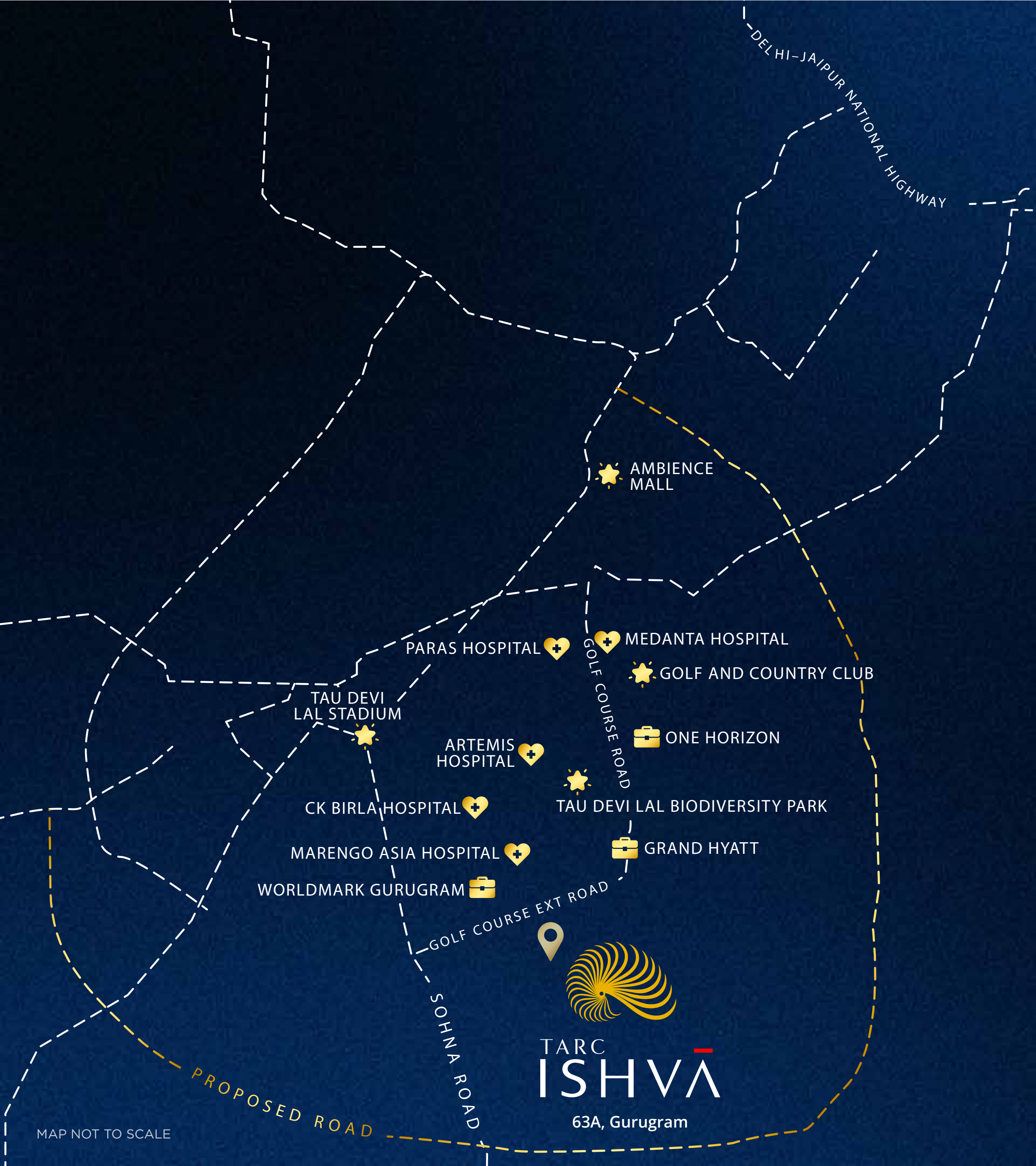
LOCATION



AN ADDRESS AT THE CENTRE OF EVERYTHING, YET COMFORTABLY APART

TARC Ishva is set in Sector 63A on Golf Course Extension Road, one of Gurugram's most refined and future-forward neighbourhoods. The location brings together the best of the city's business hubs, international schools, premium hotels, healthcare centres, and lifestyle destinations, all within effortless reach.





CONNECTIVITY



- GOLF COURSE ROAD
- SOHNA ROAD
- DELHI-JAIPUR NATIONAL HIGHWAY

COMMERCIAL



- WORLDMARK GURUGRAM
- GRAND HYATT
- ONE HORIZON

RECREATION



- TAU DEVI LAL BIODIVERSITY PARK
- GOLF AND COUNTRY CLUB
- TAU DEVI LAL STADIUM
- AMBIENCE MALL

HEALTHCARE



- MEDANTA HOSPITAL
- PARAS HOSPITAL
- MARENGO ASIA HOSPITAL
- CK BIRLA HOSPITAL
- ARTEMIS HOSPITAL

TARC
ISHVA
 63A, Gurugram

MAP NOT TO SCALE

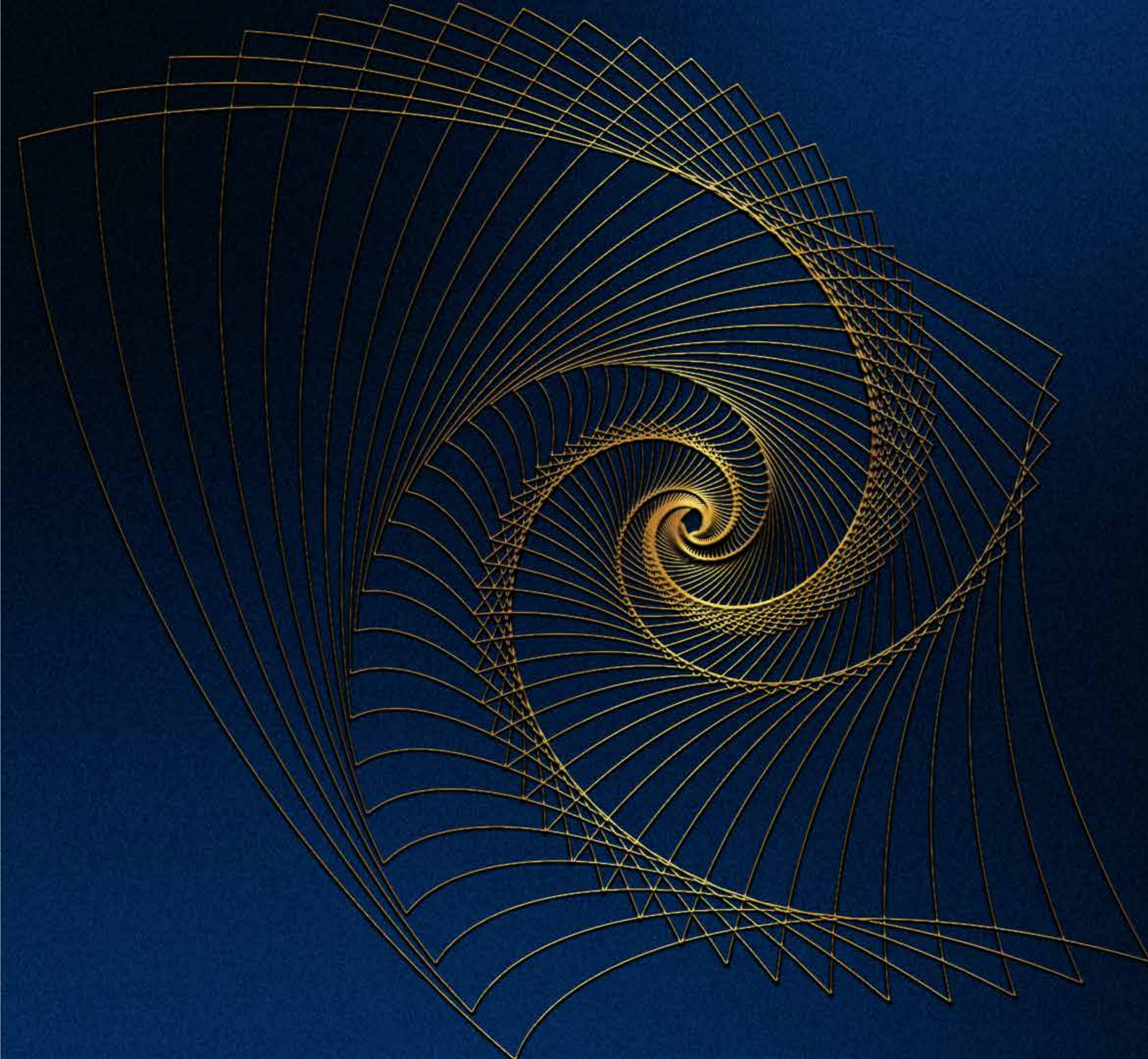
A SUCCESS STORY THAT
GURUGRAM WILL CHERISH FOREVER.



TARC
ISHVA
63A, Gurugram

The first five towers of TARC Ishva are completely sold out, reflecting exceptional demand from both homebuyers and channel partners.

Representative Image



A MASTERPLAN INSPIRED
BY THE GOLDEN RATIO

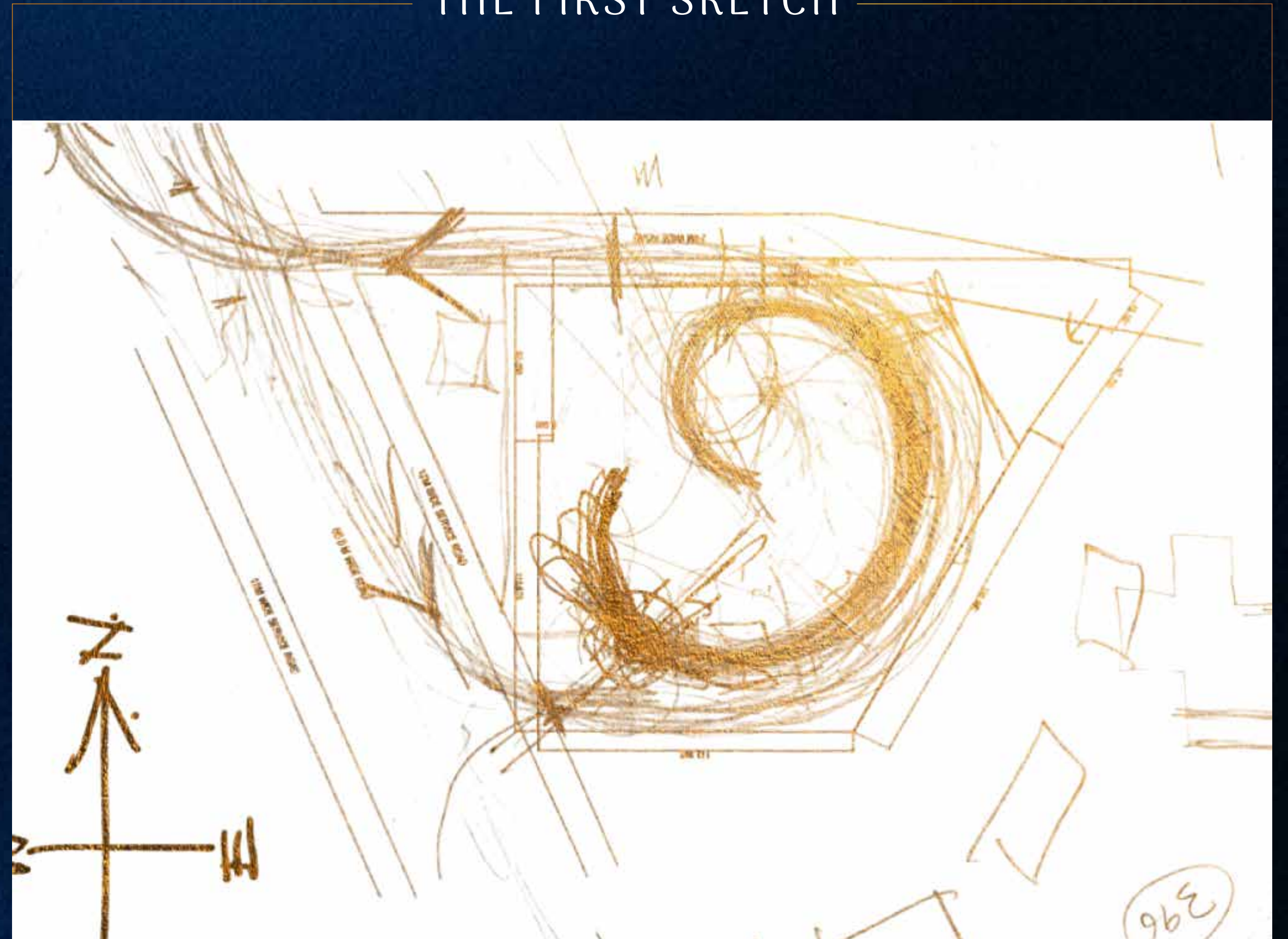
THE FIRST SKETCH

The planning of TARC Ishva is anchored in sacred Indian geometry and aligned with the Golden Ratio, resulting in a layout that feels balanced and intuitively natural. The central greens draw inspiration from the Brahmasthan.

The landscaped zones, pathways, and gardens follow harmonious proportions, creating a community that feels grounded, peaceful, and deeply connected to nature.

THE CONCEPT

DEPTH OF THE GOLDEN RATIO

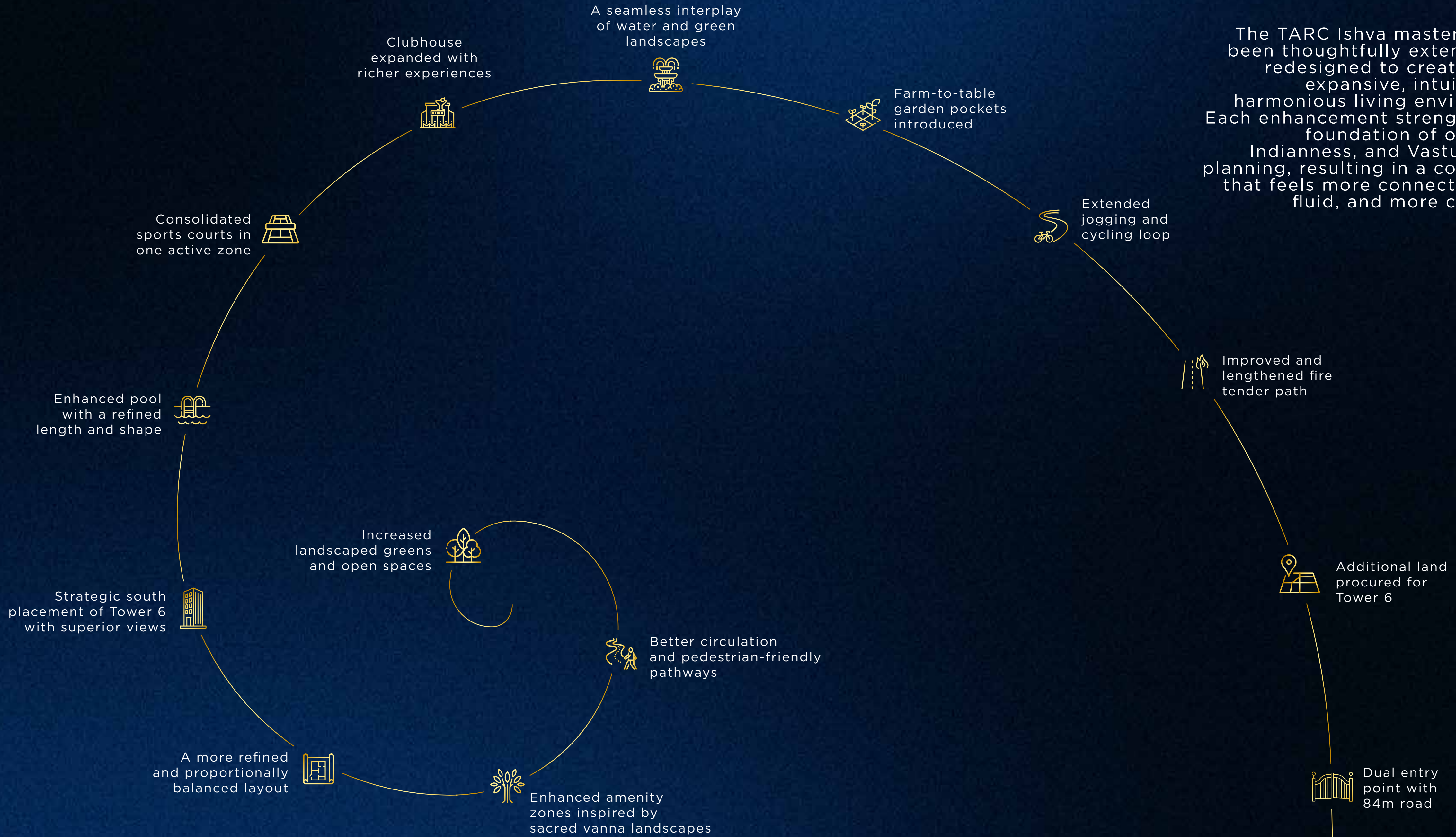




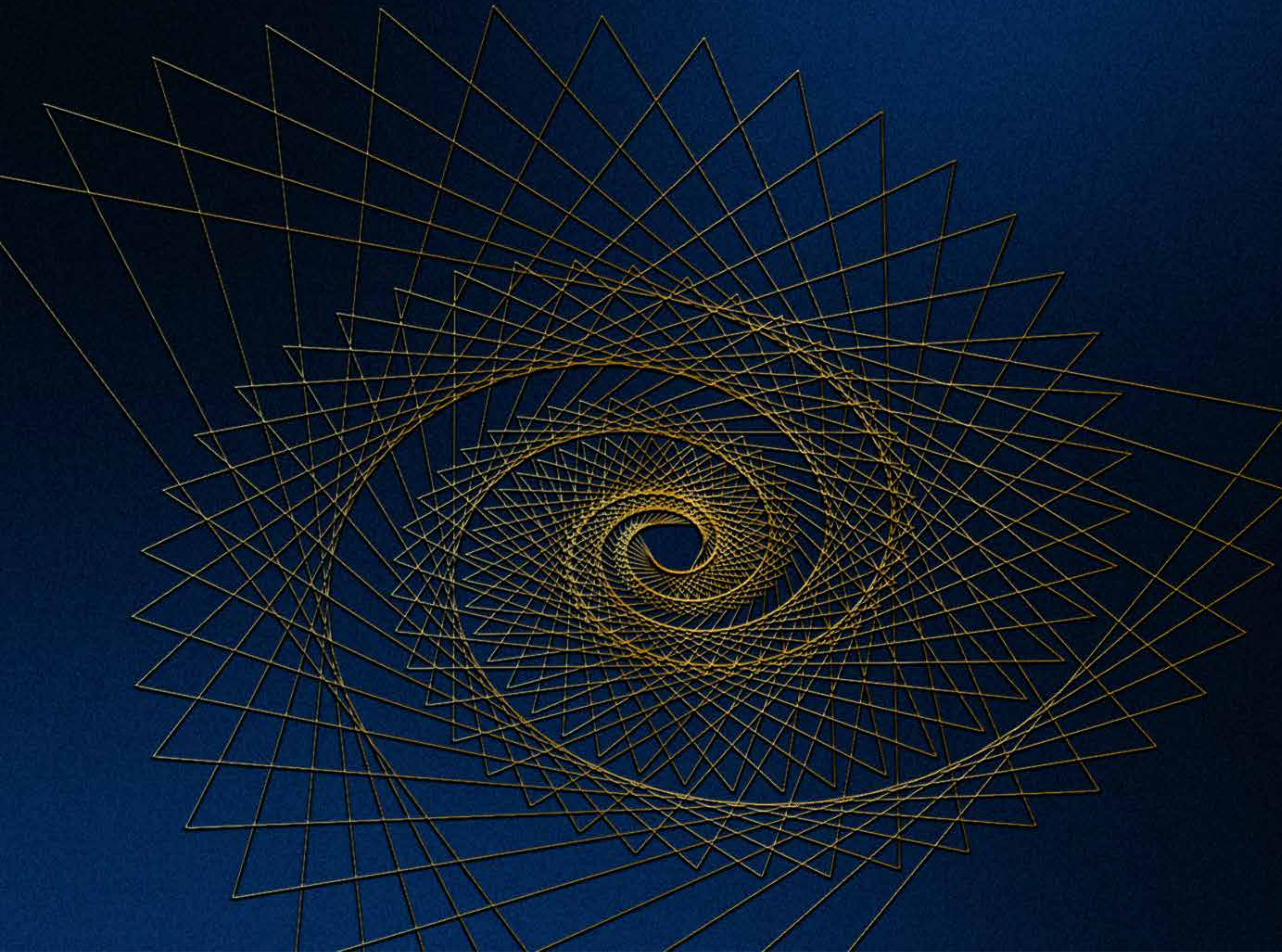
THE MASTER PLAN



TARC Ishva has undergone a thoughtful evolution to strengthen its foundational principles.



The TARC Ishva masterplan has been thoughtfully extended and redesigned to create a more expansive, intuitive, and harmonious living environment. Each enhancement strengthens its foundation of openness, Indianness, and Vastu-aligned planning, resulting in a community that feels more connected, more fluid, and more complete.



GRAND ARRIVALS





84-METRE ROAD

TARC Ishva has been designed with two distinct arrival experiences, each crafted with architectural precision and a clear purpose.

The 84-metre wide entrance is reserved exclusively for residents. This broader, greener boulevard offers an uninterrupted and seamless entry and exit experience, enhancing everyday convenience while elevating the sense of coming home. Its scale, landscaping, and clarity of movement create a dignified and effortless approach to the residential towers.

Together, these two gateways set the tone for TARC Ishva. Refined, intuitive, and built for modern living.



24-METRE ROAD

The 24-metre-wide entrance creates a direct, welcoming approach to Club Ishva. It is planned for visitors and club guests, ensuring smooth access without intersecting residential movement. The arrival sequence is ceremonial, structured, and anchored by the clubhouse's strong architectural presence.

A dedicated entrance is provided for delivery personnel, household staff, and service access.

BUILT, DESIGNED AND NURTURED BY TARC.

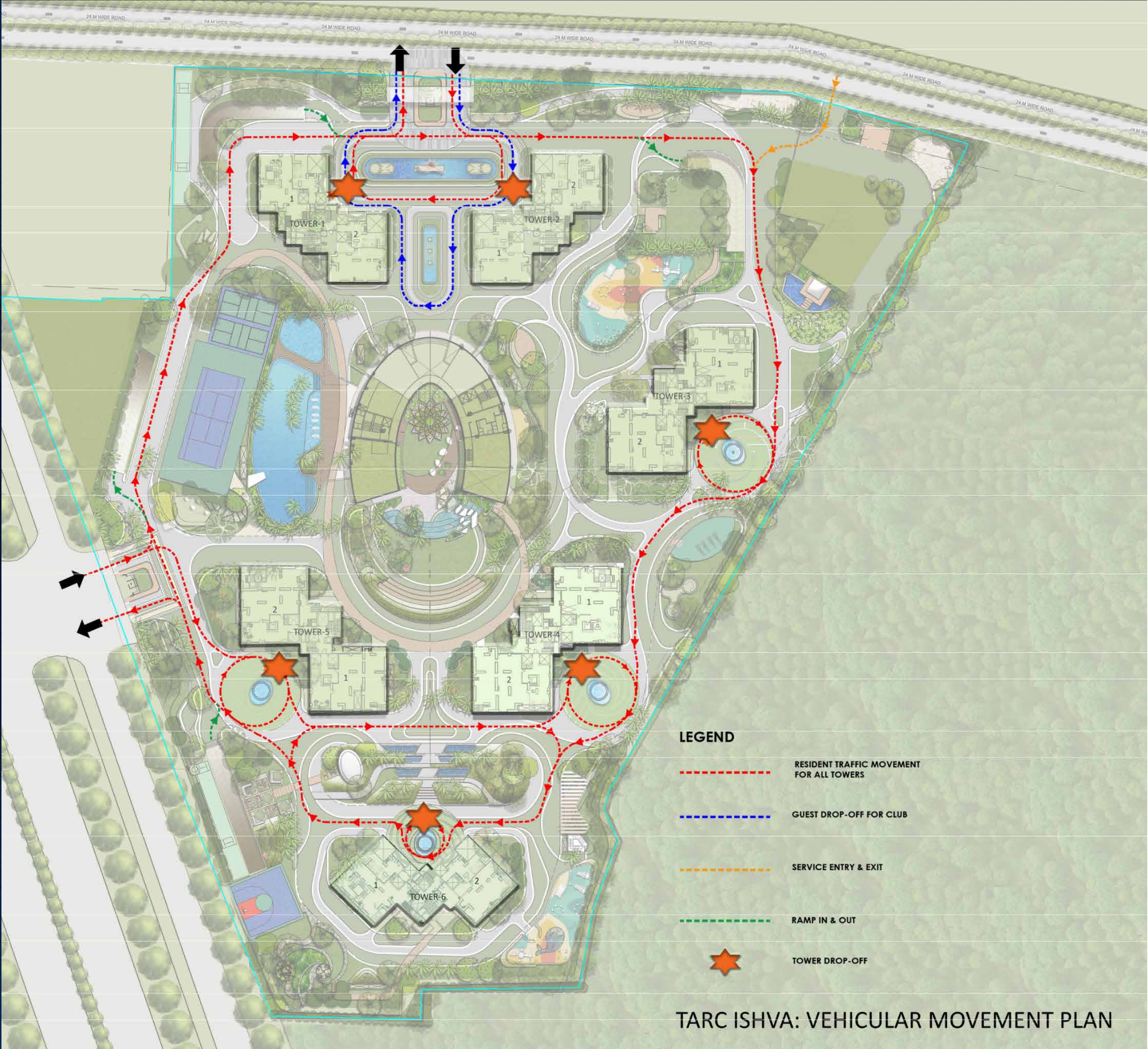
The 84-metre road is a statement crafted and fully maintained by TARC. Designed as a grand, green boulevard, it gives residents the luxury of a second, seamless entry. Because coming home should always feel effortless, no matter which way you choose to arrive.



A THOUGHTFULLY ORCHESTRATED MOVEMENT SYSTEM DESIGNED FOR CLARITY AND COMFORT

The Towers at TARC Ishva benefit from a circulation system designed to make every arrival effortless and every departure seamless. The internal pathways, drop-offs, and elevator movements have been structured to minimise overlap, enhance safety, and provide a dignified sense of arrival for residents and guests.

The entry and exit pathways are clearly defined, allowing vehicles to move smoothly across the site without congestion. Each tower is served by its own streamlined route, ensuring residents experience a calm, orderly flow whether entering the community or leaving.



- LEGEND**
- RESIDENT TRAFFIC MOVEMENT FOR ALL TOWERS
 - GUEST DROP-OFF FOR CLUB
 - SERVICE ENTRY & EXIT
 - RAMP IN & OUT
 - ★ TOWER DROP-OFF

TARC ISHVA: VEHICULAR MOVEMENT PLAN



Artistic Impression

BASEMENT DROP-OFF

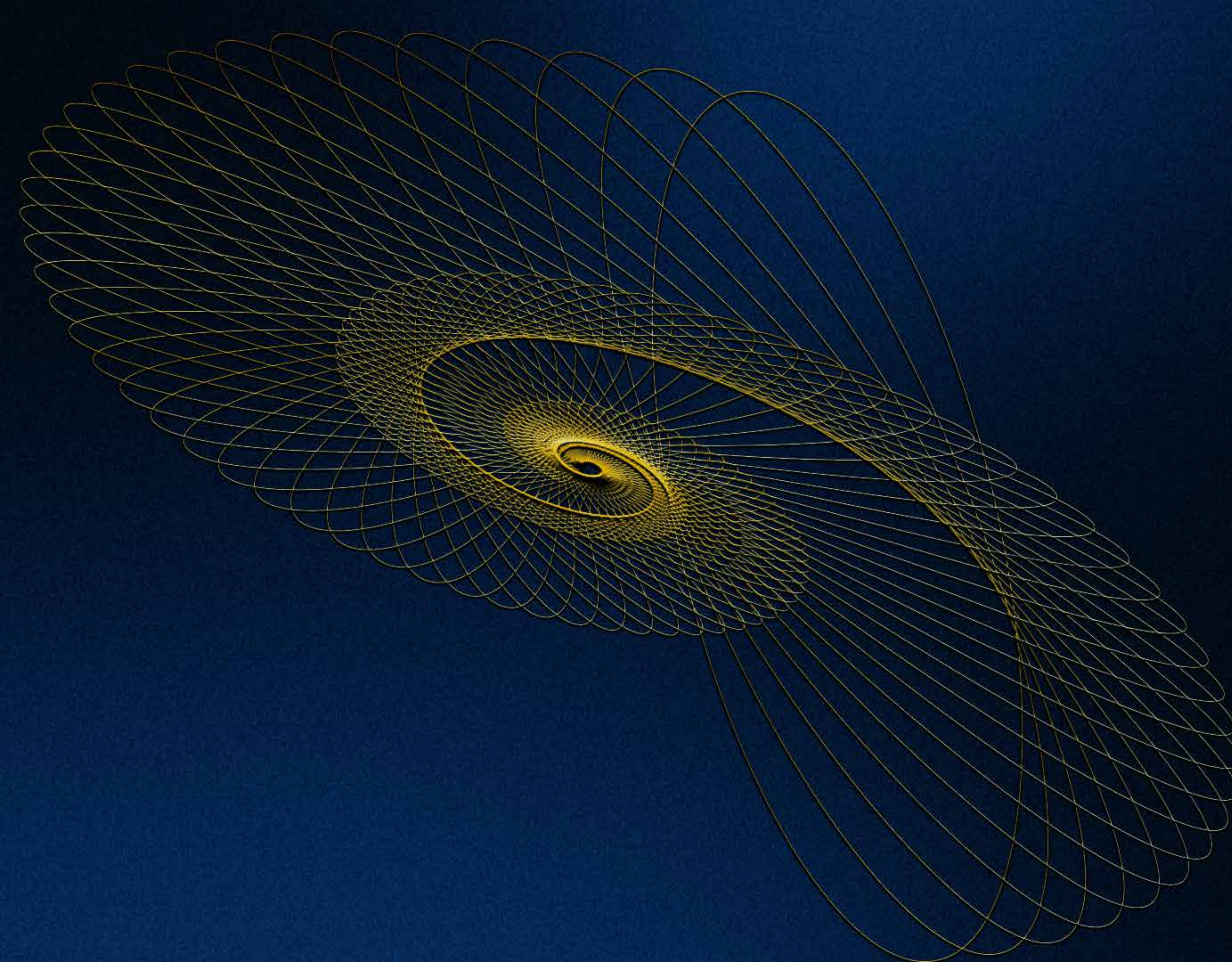
Visitor access via a separate basement entry, ensuring smooth arrivals.

GROUND FLOOR DROP-OFF

Designed as an elegant arrival point to welcome TARC Ishva residents, guests and visitors.

ELEVATOR MOVEMENT

Residents can pick a basement-to-floor or ground-to-floor transition for direct, uninterrupted travel from the parking level to their private core.



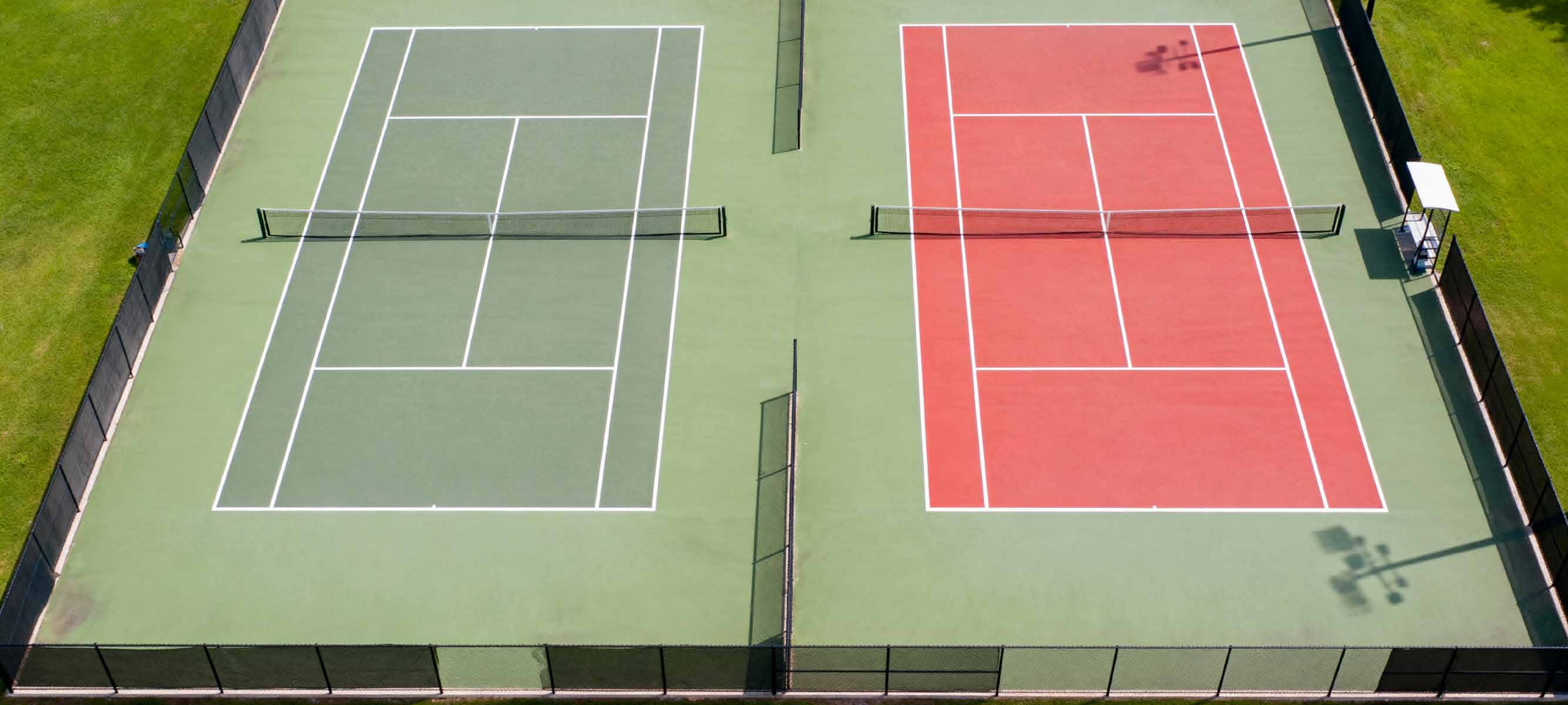
EXPERIENCES



A large, curved swimming pool with clear blue water. On the left side, a white waterfall structure pours water into the pool. The pool is surrounded by lush greenery, including palm trees and various tropical plants. In the background, a modern high-rise apartment building with many windows is visible. The sky is bright and clear.

SWIMMING POOL

The increased 40-metre lap length pool now has a soothing waterfall and lush green outlines.



ACTIVE ZONE

The Pickleball court and Tennis Court now sit side by side.

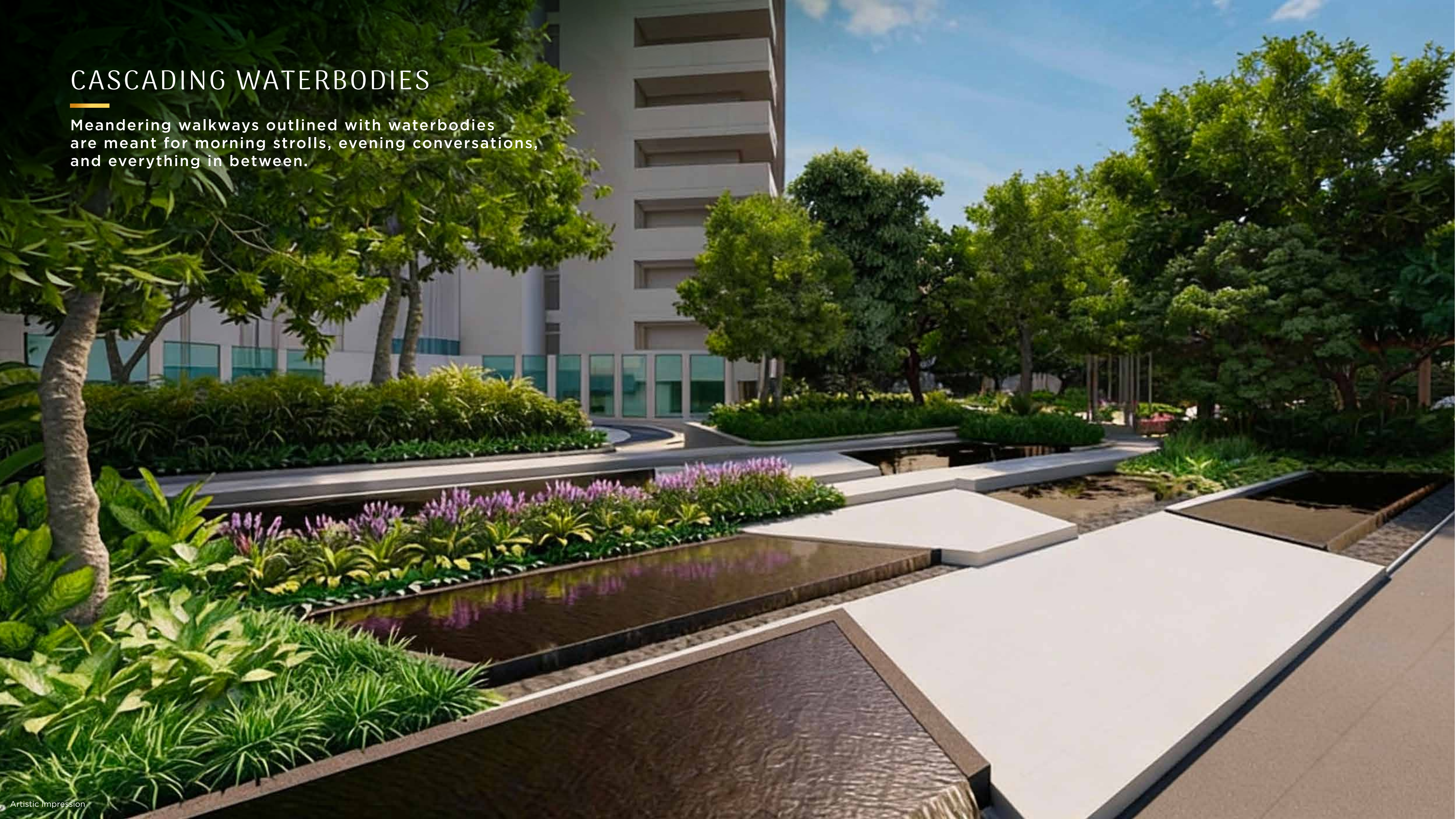
MANDALA GARDEN

A serene, geometry-inspired retreat designed with Indian Vedic history and varied colour plantations representing planets.



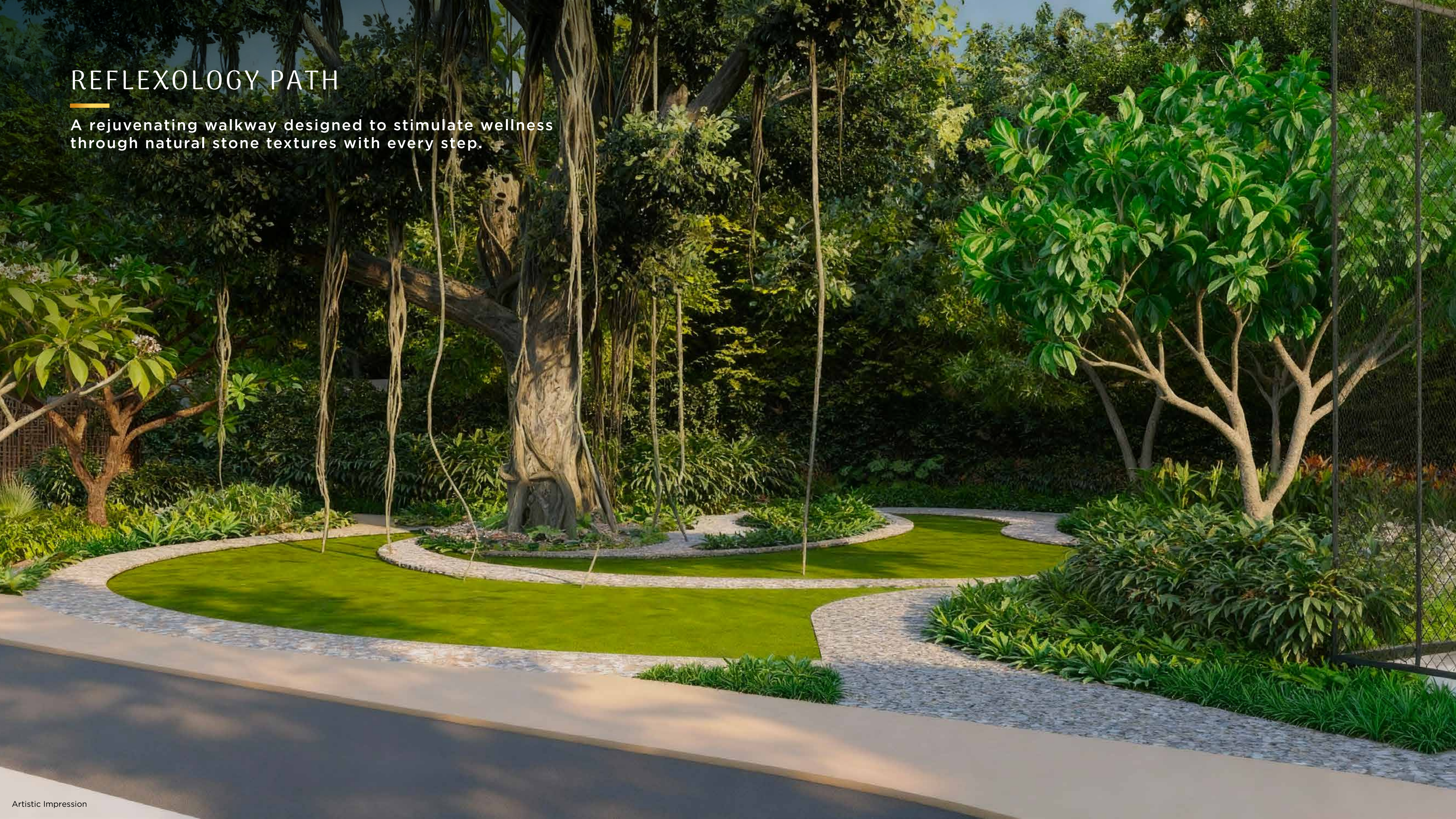
CASCADING WATERBODIES

Meandering walkways outlined with waterbodies are meant for morning strolls, evening conversations, and everything in between.



REFLEXOLOGY PATH

A rejuvenating walkway designed to stimulate wellness through natural stone textures with every step.



AROMATIVE GROVE WALK

A fragrant garden trail lined with soothing, aromatic plants that create a calming sensory experience.



NANDI GARDEN NEAR THE TEMPLE

A tranquil, contemplative garden anchored by the symbolism of Nandi, offering a serene space for reflection.





JOGGING AND CYCLING LOOPS

Extended, well-shaded approximately 1 km long loops that provide smooth, uninterrupted routes for daily fitness and outdoor movement.

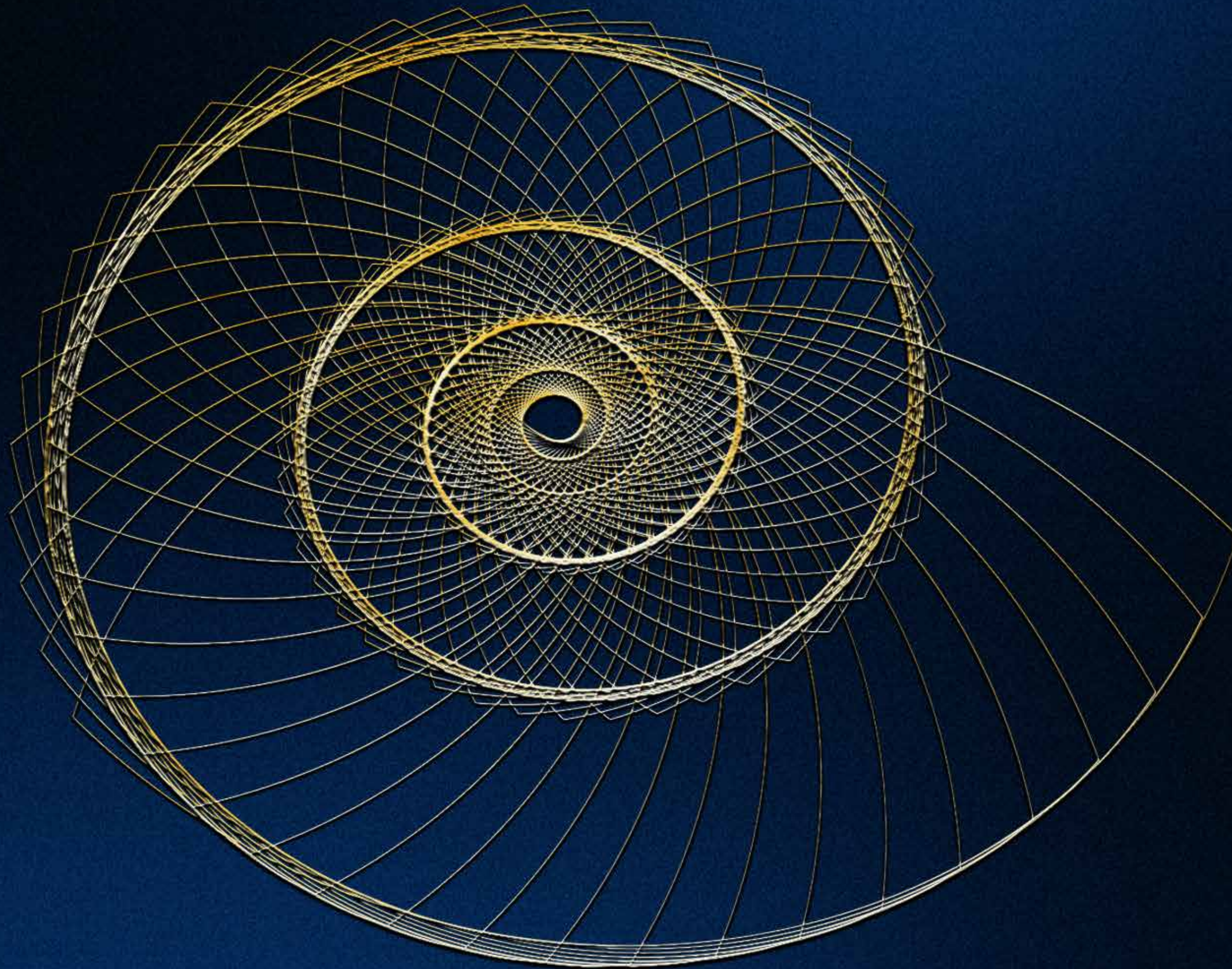


KIDS' PLAY AREA

FARM-TO-TABLE

A curated green pocket where residents can engage with fresh herbs and edible greens grown within the community.





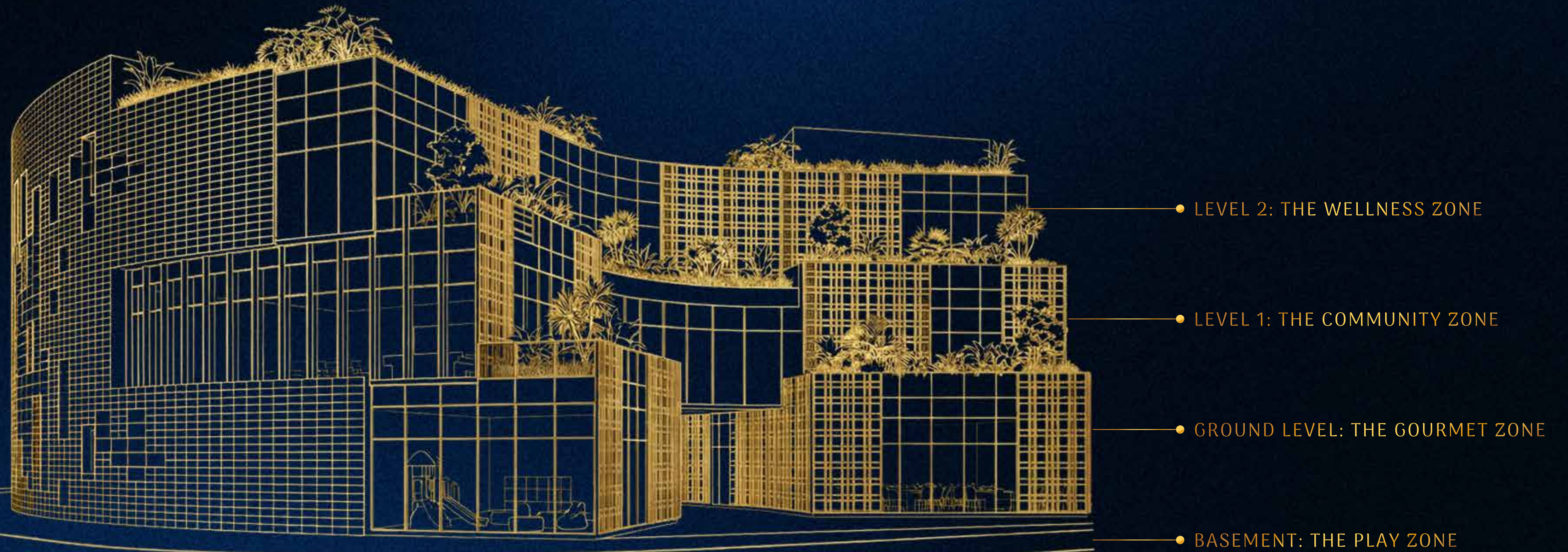
CLUB ISHVA





THE FOUR-TIER CLUB EXPANSION

Club Ishva experience has been enhanced to include additional recreational rooms, upgraded wellness and fitness facilities, expanded indoor play zones, new lounges and activity suites, improved circulation and access, and a more seamless indoor-outdoor relationship.





Artistic Impression

THE PLAY ZONE

Sitting at the basement of Club Ishva, the Play Zone is for competition, conversations, and letting time slip.

-  **Bowling Alley**
-  **E-sports**
-  **Karaoke Room**
-  **Music Room**
-  **AV Room**
-  **Gaming Room**
-  **Squash Court**
-  **Pickleball Court**
-  **BOH & Kitchen**
-  **Retail Area**



Artistic Impression

THE GOURMET ZONE

The ground level of Club Ishva is for peaceful brunches, effortless hosting, and memorable meals.

 Front Desk

 Restaurant


 Central Courtyard

 Cafeteria

 Business Centre

 Concierge

 Kids' Play Area

 Pre-Function Area

 Banquet

 Kitchen




Artistic Impression

THE COMMUNITY ZONE

The first level of Club Ishva is the address for gatherings, celebrations, and moments that bring neighbours closer.

 Cards Lounge

 Senior Citizen Lounge

 Billiards Room

 Cigar Lounge

 Wine Cellar

 Party Hall

 Club Rooms

 Kitchen



Artistic Impression

THE WELLNESS ZONE

The crown of Club Ishva devotes itself to movement, mindfulness, and switching off from everything else.



Gym



Pilates



Yoga Room



All-weather Indoor Pool



Sauna



Spa



Jacuzzi



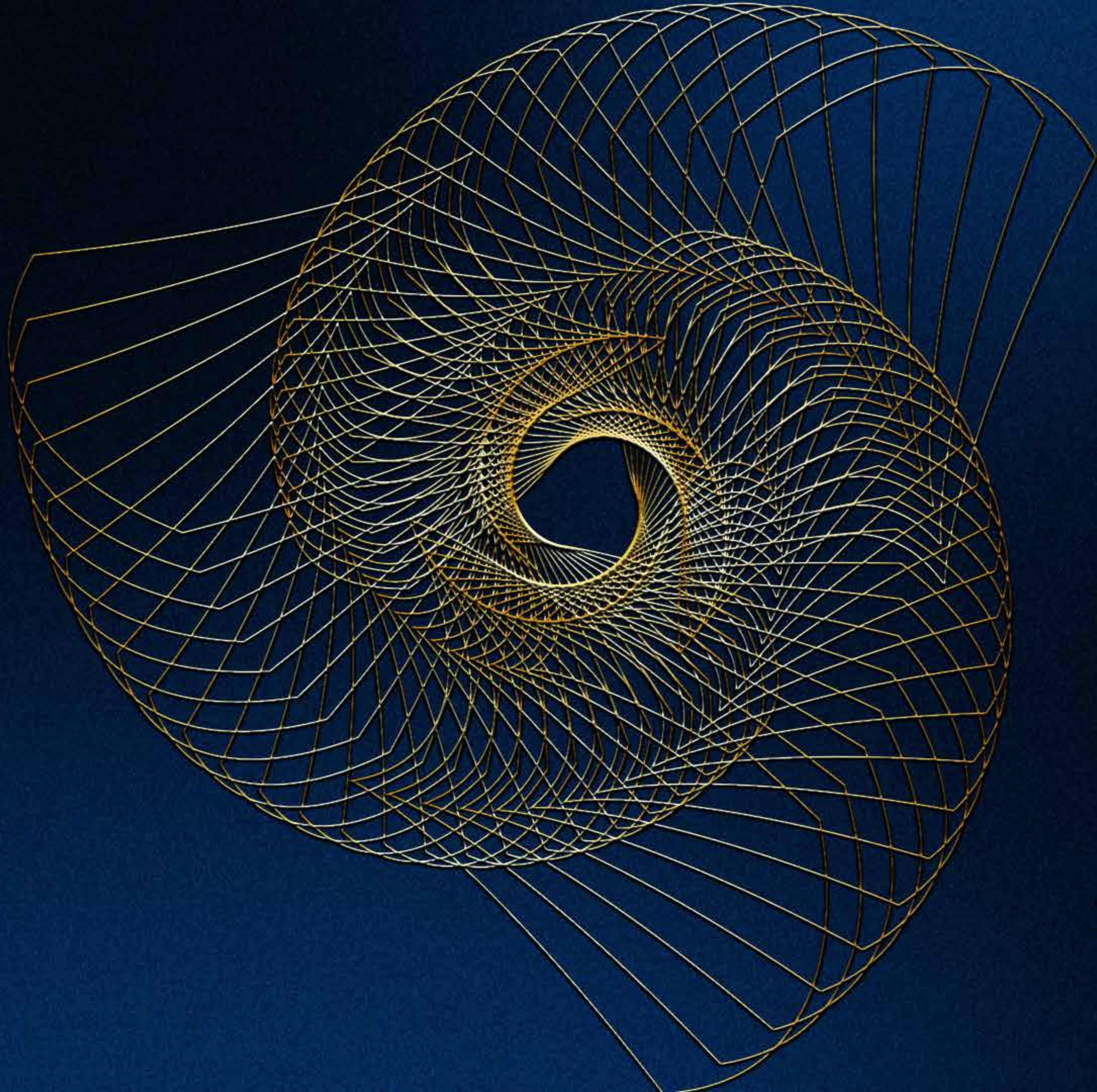
Red Light Therapy Room



Cryotherapy Room

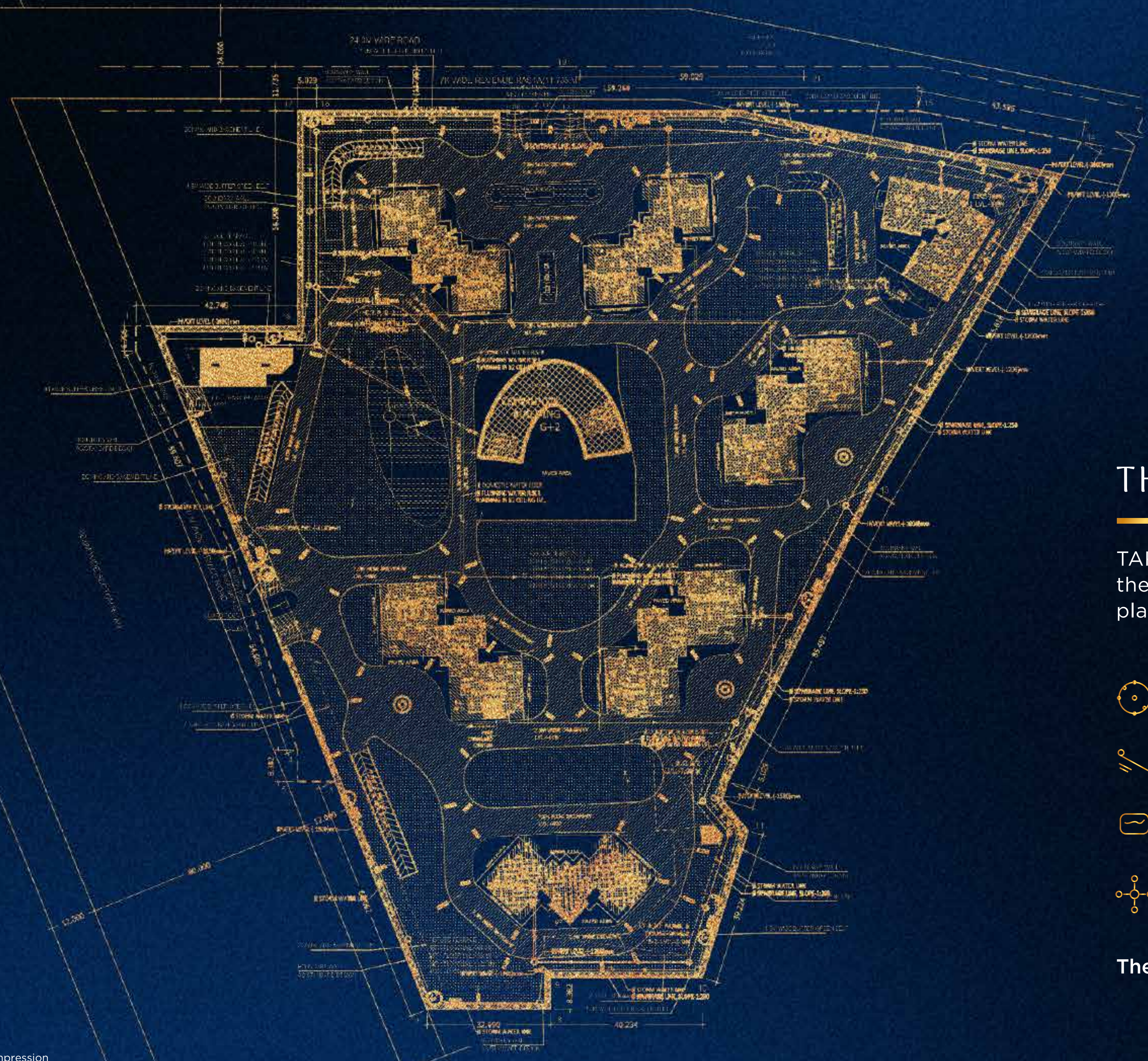


Steam Room







SECURE
INFRASTRUCTURE PLANNING



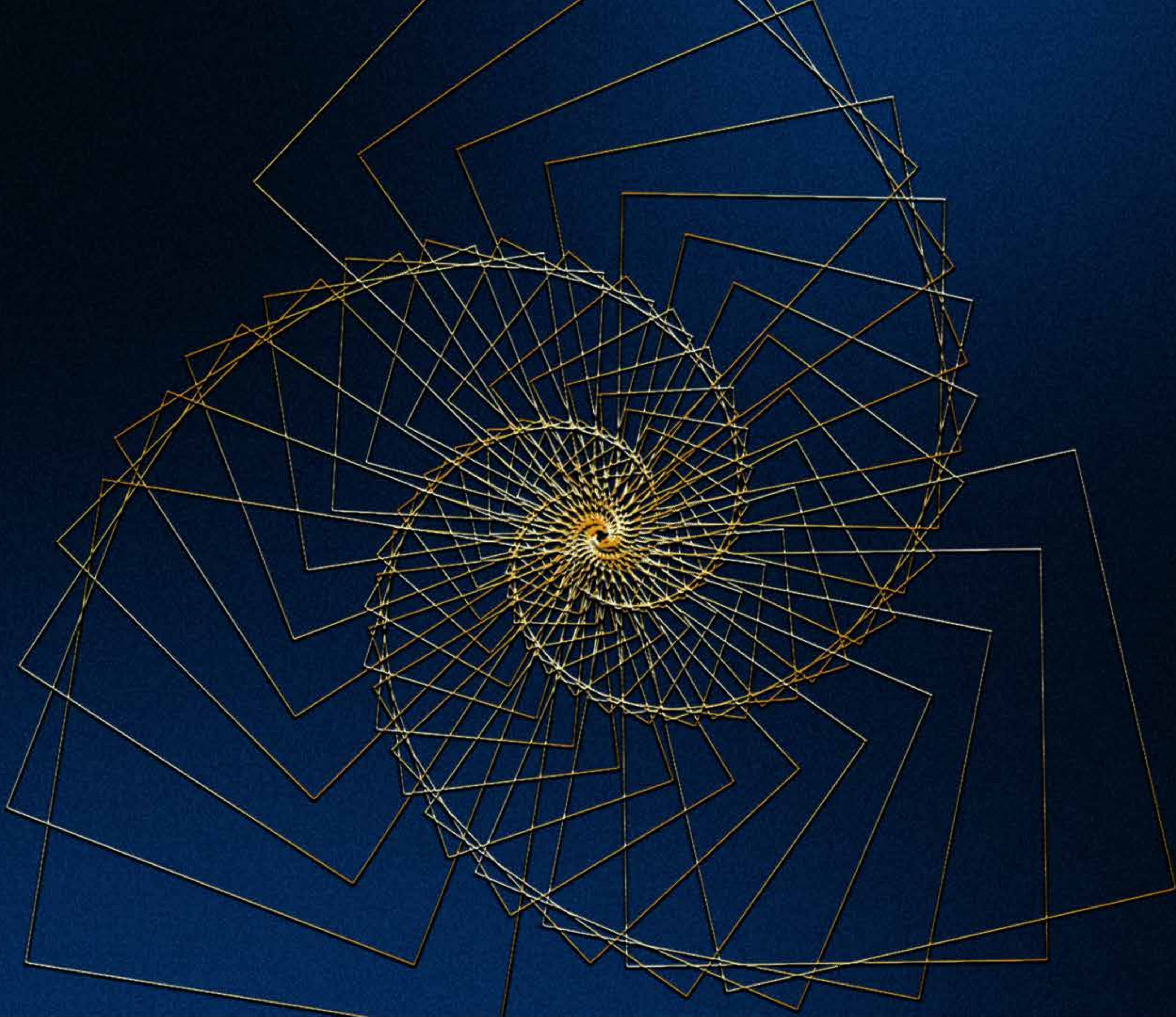


THE DRAINAGE SYSTEM

TARC Ishva residents never have to worry when there are heavy rains, thanks to its elevated placement and advanced drainage planning.

-  Well-distributed inlet points
-  Structured slope gradients
-  Engineered stormwater channels
-  A fully integrated sitewide network

The system ensures efficient water management throughout the year.




THE NEXT CHAPTER
OF TARC ISHVA



THE TALLEST TOWER WITH THE BEST ARAVALLI VIEWS

 Tallest with
46 floors

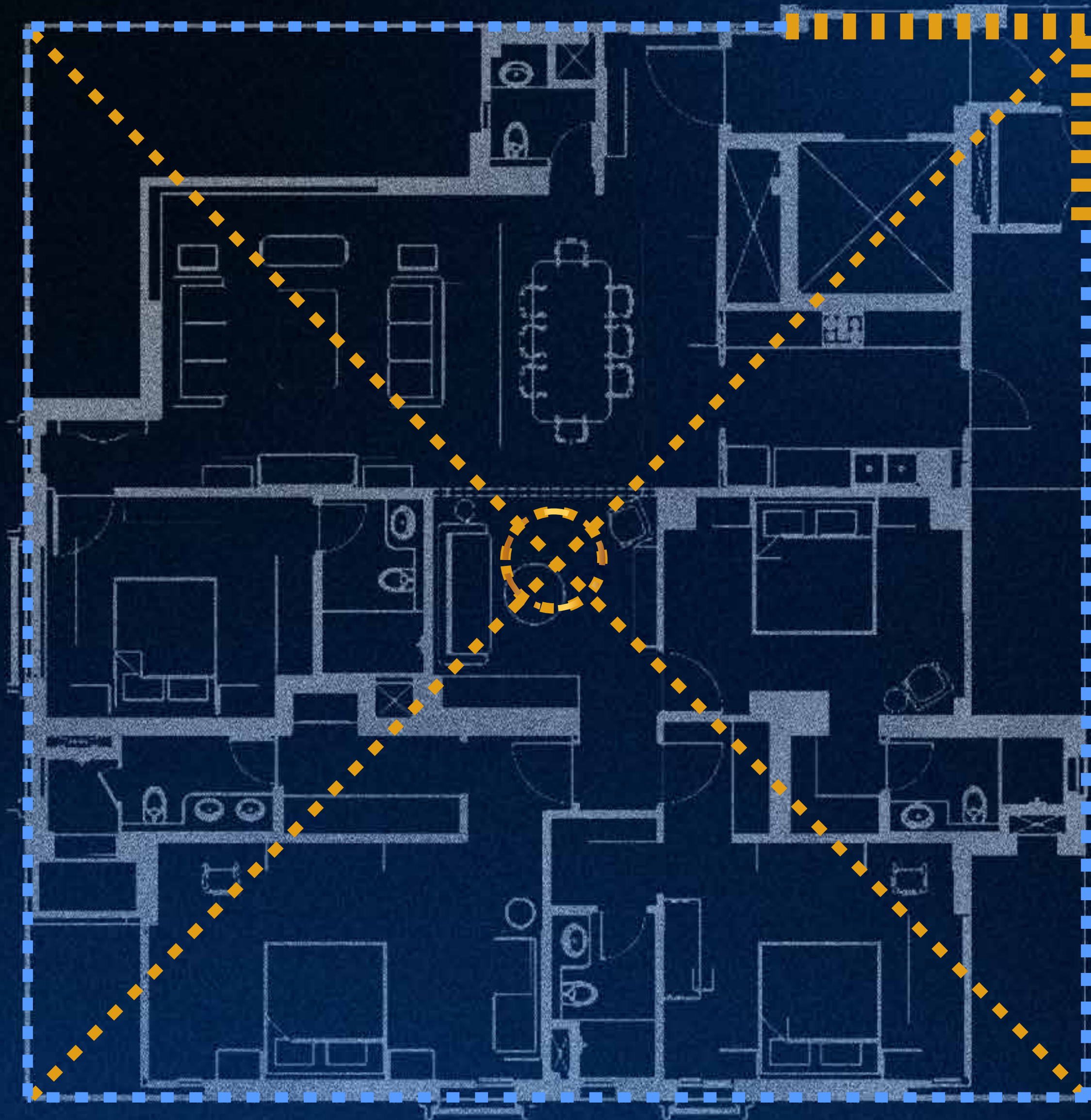
 The best views
in TARC Ishva

 Exclusive land parcel
and dual access



Actual View

The height and placement come together to create unmatched panoramic experiences.



VASTU-ALIGNED PLACEMENT

Tower 6 holds a significant Vastu advantage, being positioned in the southern zone of the masterplan, a placement traditionally associated with strength, stability, and positive energy.

This ensures a residence that feels balanced, grounded, and harmonious.

FLOOR-TO-CEILING AND FLOOR-TO-FLOOR HEIGHT

All towers offer an enhanced floor-to-ceiling height.



THIS RESULTS IN:



Better natural light



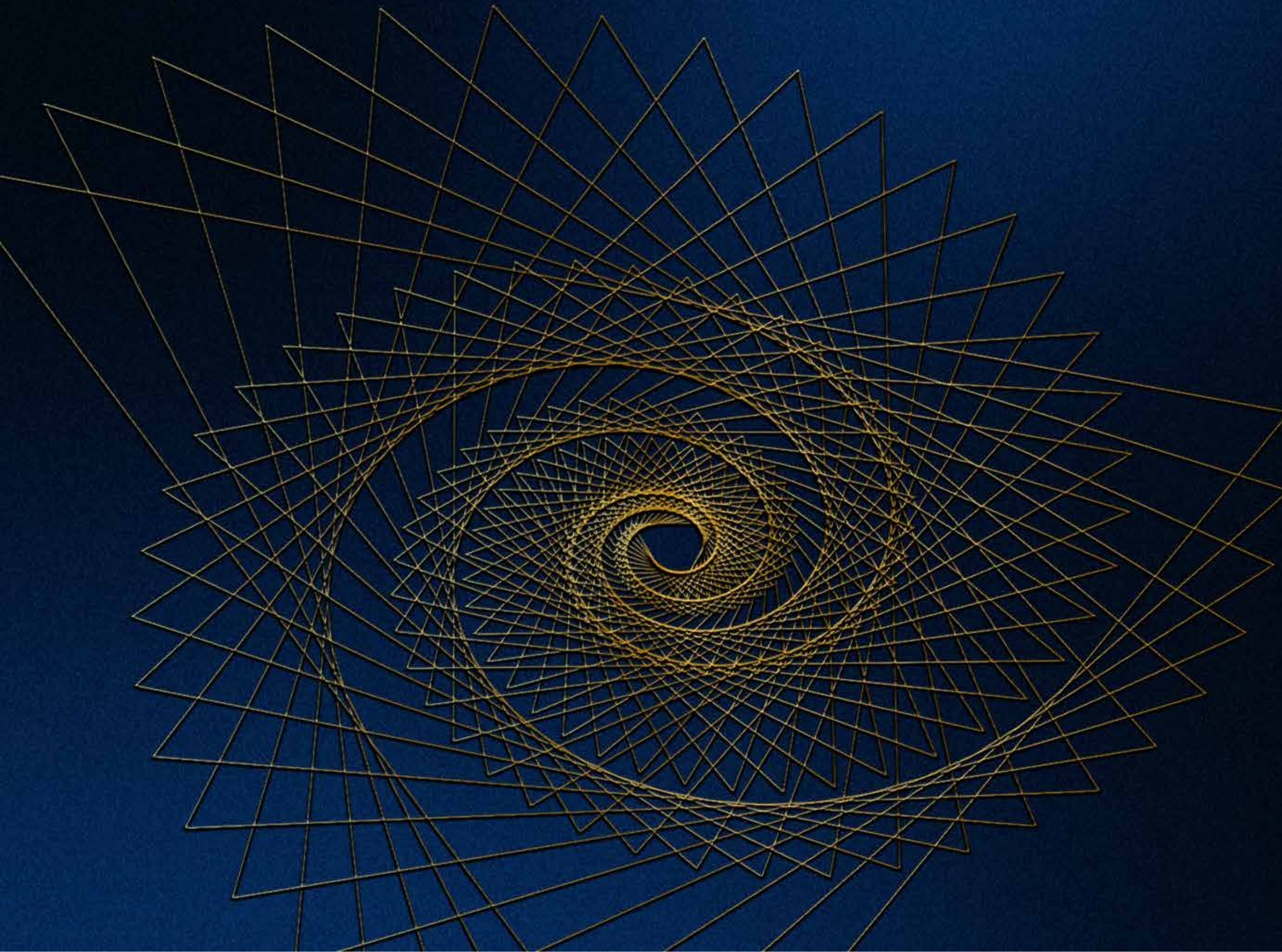
Airier rooms



A more luxurious spatial volume



An improved sense of openness



FLOOR PLANS



ISHVA

3.5 BHK (TYPE A4)

TYPICAL FLOOR

3 Bedrooms
 3 Bath
 Living Dining
 Powder Bathroom
 Study / Lounge / Puja
 Helper's Room / Home
 Office / Study

Carpet Area
 153.98 Sq mtr
 /1657 Sq ft

Total Balcony area
 41.26 Sq mtr
 /444 Sq ft

Private Useable area
 195.24 Sq mtr
 /2101 Sq ft

Saleable area
 2942 Sq ft

1 Sq. mtr = 10.764 Sq ft

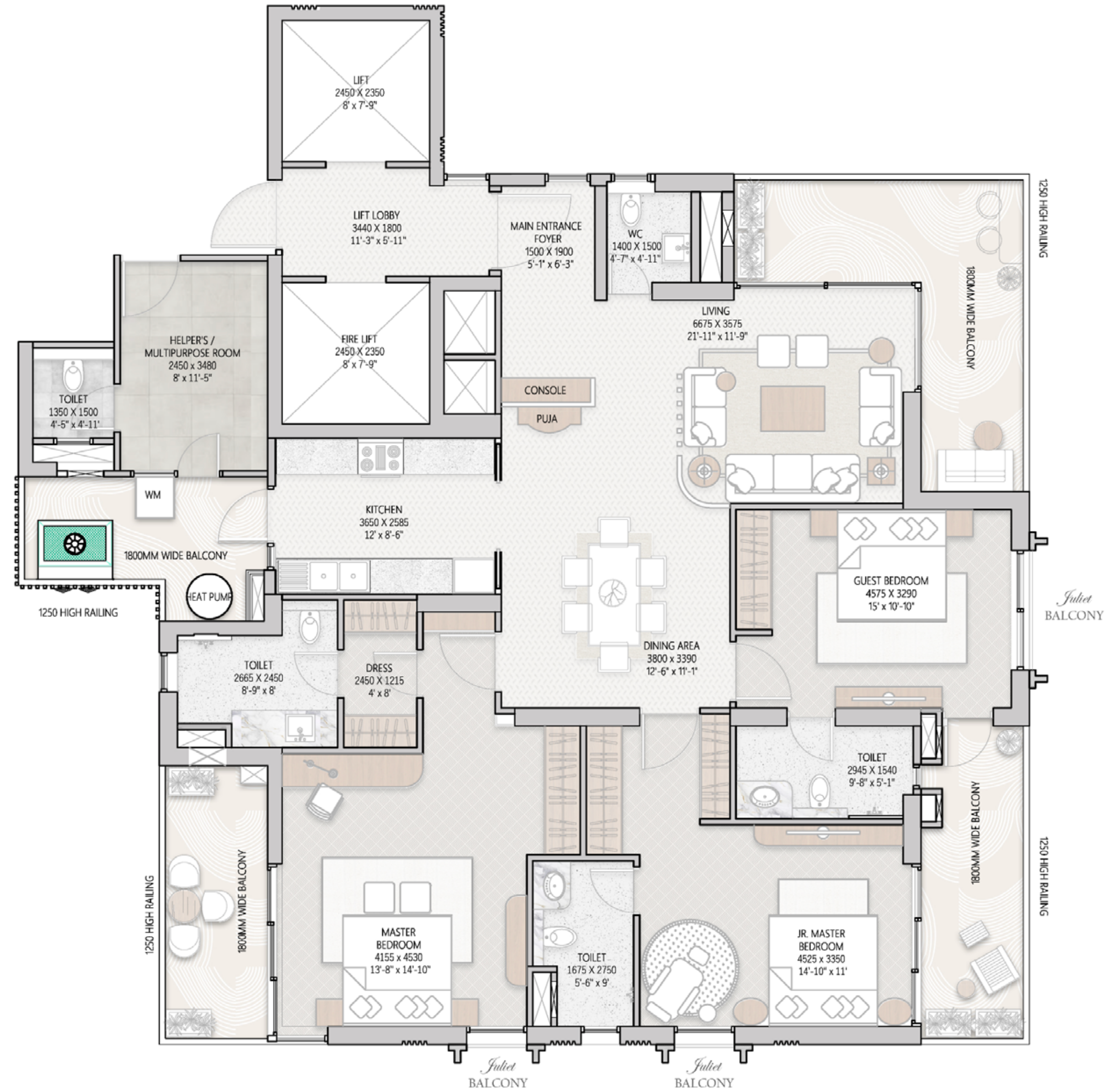
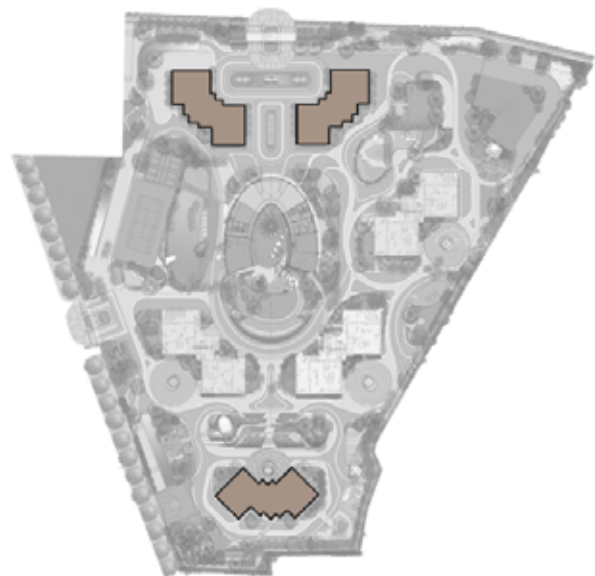
Panaromic views

Single apartment to a core /
 Private elevators & lift lobby

Column free building
 corners

Private ensuite
 walk-in-wardrobes

Juliet balconies



COME HOME TO THE FINEST CHAPTER
OF FOUR-SIDE OPEN LIVING.





TARC LIMITED

CIN: L70100DL2016PLC390526 **RERA No.:** RC/REP/HARERA/GGM/865/597/2024/92

Registered Office: 2nd Floor, C-3, Qutab Institutional Area, Katwaria Sarai, New Delhi- 110016

Contact: 011 4124 4300 | tarc@tarc.in | www.tarc.in

Disclaimer: TARC ISHVA RERA No. RC/REP/HARERA/GGM/865/597/2024/92 is being constructed by TARC LIMITED ("Company") CIN: L70100DL2016PLC390526, with a configuration of 3 & 4 BHK Apartments in Sector 63 A, Gurugram, Haryana and this advertisement is only for the purpose of providing information to the viewers showcasing the configurations of the project and this advertisement is solely for informational and advertisement purposes and not to be relied on this information for making any booking/purchase/investments in any project of the Company and therefore Company is not liable for any consequence of any action taken by the viewer relying on such material/information in this advertisement.